

ARTECH

AR VOICE LOGGER

USER'S MANUAL

Version1.0.0

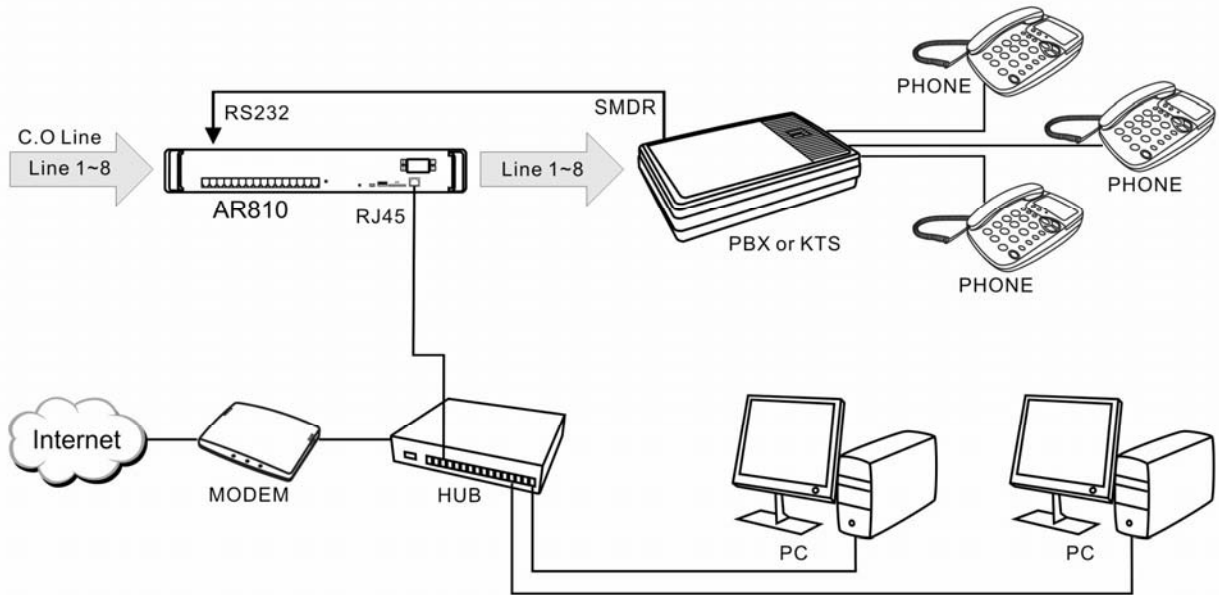
TABLE OF CONTENT

1 INTRODUCTION	1
2 OVERVIEW	1
3 PACKAGE CONTENTS	2
4 SYSTEM REQUIREMENT.....	2
5 LOG IN	2
6 AM2000 GUIDE	7
6.1 AM2000 OVERVIEW AND CONNECTION.....	7
6.2 MULTI FUNCTION RECORDING.....	8
6.2.1 Conference recording.....	8
6.2.2 Mobile phone headset recording.....	8
6.2.3 Other device through AM2000	9
7 OTHER EQUIPMENTS CONNECTION.....	10
7.1 NORMAL PHONE HANDSET CONNECTION	10
7.2 INTERPHONE CONNECTION	10

1 Introduction

Thank you for purchase of the new AR series Voice Logger. The Voice logger is a multi line stand alone recording device provide followed service

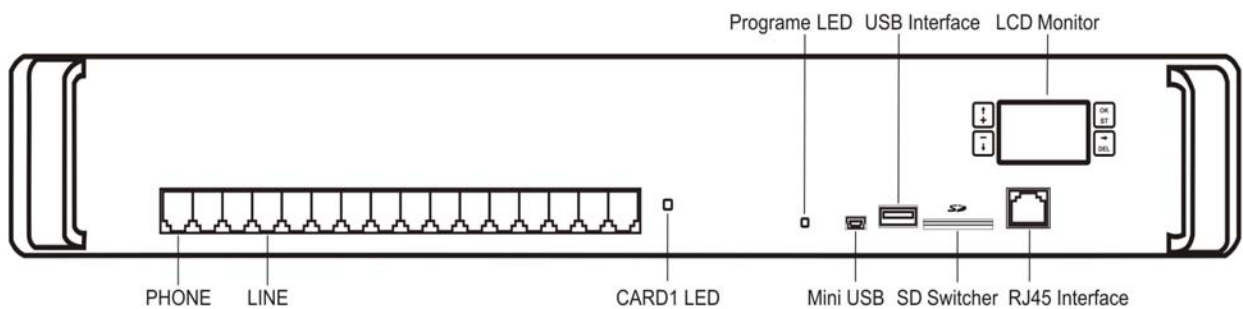
- Built-in HDD, no PC required. Recording time up to 10,000 hours
- Record all the CDR including Caller ID, date and time stamp, record type and other details.
- Record back up to PC HDD or DVD
- Various search conditions to find the record accurately
- Log in through local site or remote site.
- Multi level user authorization



2 Overview

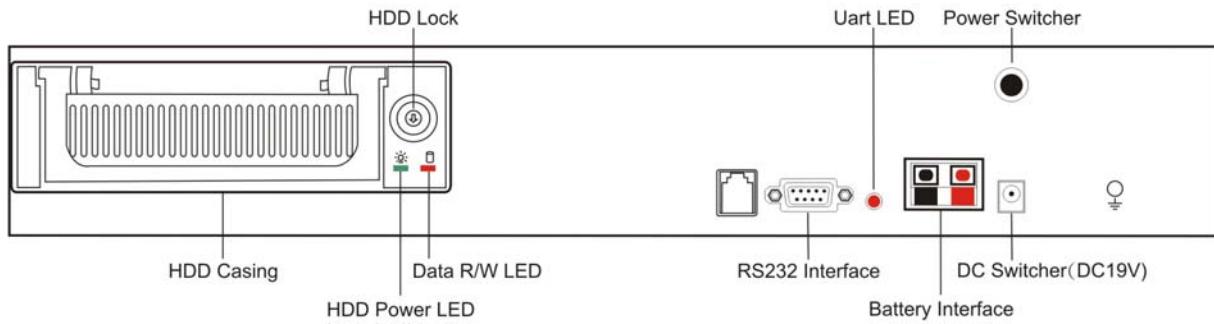
Before power on your voice logger, please check its physical detail,

Front View



- LINE : Port for landline
- PHONE: Port for telephone or PBX
- CARD1 LED : Main card status indicator for main card
- System LED : System indicator
- MiniUSB : USB port for PC USB log in
- USB Interface : Connect to other USB device
- SD Switcher : Not available yet
- RJ45 Interface : Internet or PC connection
- LCD Monitor: System IP address configuration

Rare View



- RS232 Interface : Connect to PBX SMDR output
- Uart LED : LED turns on when SMDR connected
- Battery Interface : Conect to backup battery or PBX power
- DC Switcher :DC jack (DC19V)
- Power switcher : Power ON/OFF

3 Package contents

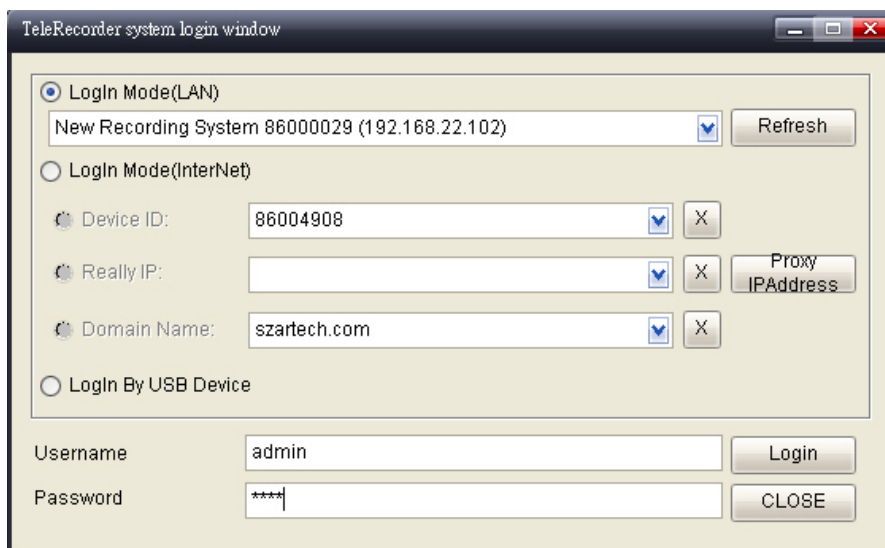
- a. AR Series Voice Logger
- b. AR Program CD
- c. USB cable
- d. RJ11 cord (8 for AR810, 16 for AR1610)
- e. User's manual
- f. Quick installation guide
- g. Power adator (DV 19V)
- h. RS232 cable
- i. RS232 adatpor
- j. Rack fixer
- k. Screw
- m. 1.5M RJ45 cord
- n. Key for removable HDD

4 System requirement

- Pentium 400 MHz CPU
- Windows VISTA/XP/2000/NT OS (**Except Winddows 98 & Windows**)
- 10MB or above HDD space (More HDD space required when backup the record through PC)
- 128 MB RAM
- CD-ROM
- LAN, ADSL, ISDN, 33.6K Modem
- USB port
- RJ45 port

5 Log in

Double click AR Series Voice Logger program, the log in window will popo up. Default Username is **admin** (small letter), password is 1111.



There are 4 modes to access AR voice logger

A. via LAN (local access)

When your company interior network has DHCP Server connection, Voice Logger will obtain IP address automatically. If you want to login system under such a network, just run the application software, it will popup login window, you'll see all active Voice Logger device ID. Select the device you need, input username and password, then will login system.

B. via Internet (remote access)

User can login Voice Logger via remote access by WAN connection when IP of Voice Logger must be configured as virtual fixed IP (ex. 192.168.1.13), and it's necessary to set virtual server on your Router, specifying TCP 5053-5057 ports to Voice Logger. The router external IP can be a dynamic IP.

How to:

Log in window – check Internet (remote access) :

1. **Device ID** : Input AR device ID, username and password
2. **Real IP** : Input internet route external IP address, username and password
3. **Domain Name** : Input AR DNS, username and password

C. via USB

If this is the first time for you to connect AR with PC via USB,you have to install USB driver before AR program. Click [Log in], there will be the login window. Check [Login by USB device], then input username and password.

Cautions: If your PC has Win CE, Windows Mobile and other PDA software, please close them in order to avoid confliction.

USB Driver installation :

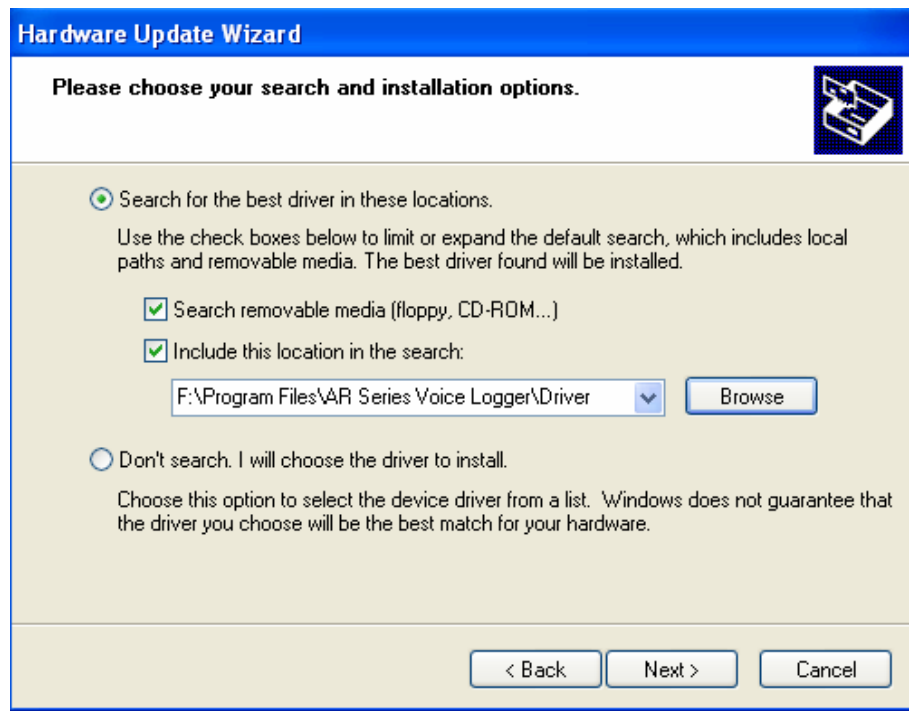
- a. Power ON AR voice logger; connect one end of USB cable to AR [Mini USB], another end to PC USB port. PC will guide you to [Hardware Update Wizard] automatically, select [Yes, this time only], click [NEXT]



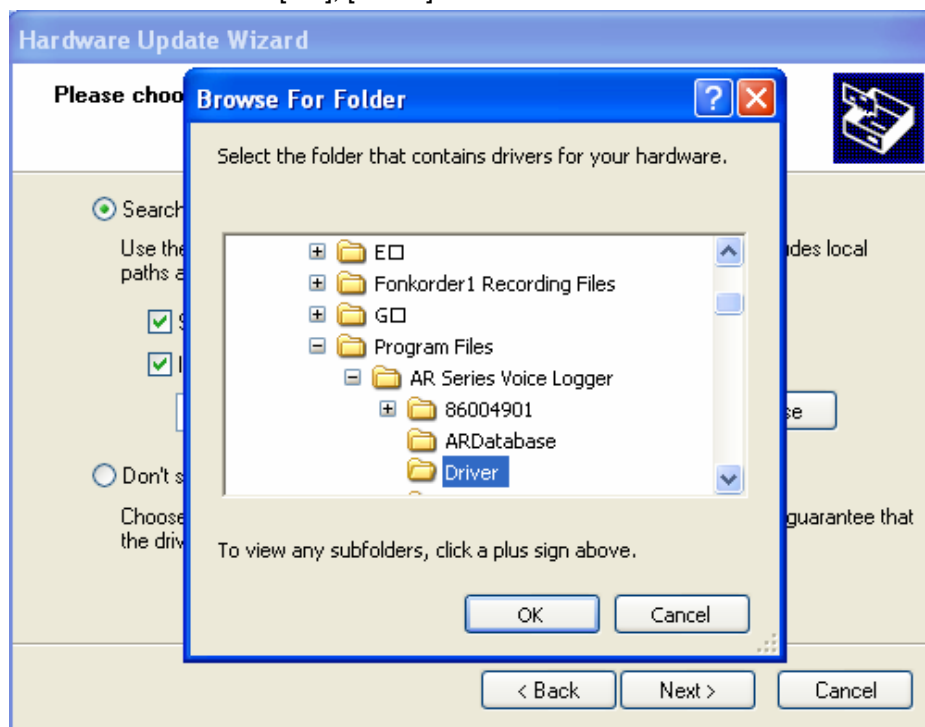
- b. Select [Install from a list or specific location (advance)] , then click [NEXT]



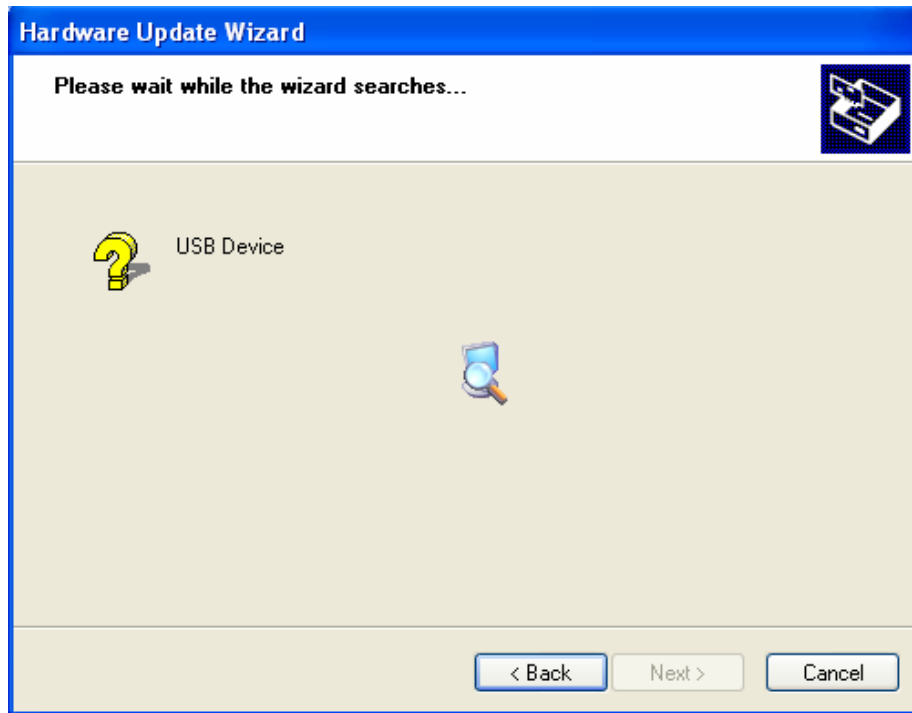
- c. Check all the search options and click [Browse] to find out AR USB driver path, click [Next] to start installaion.



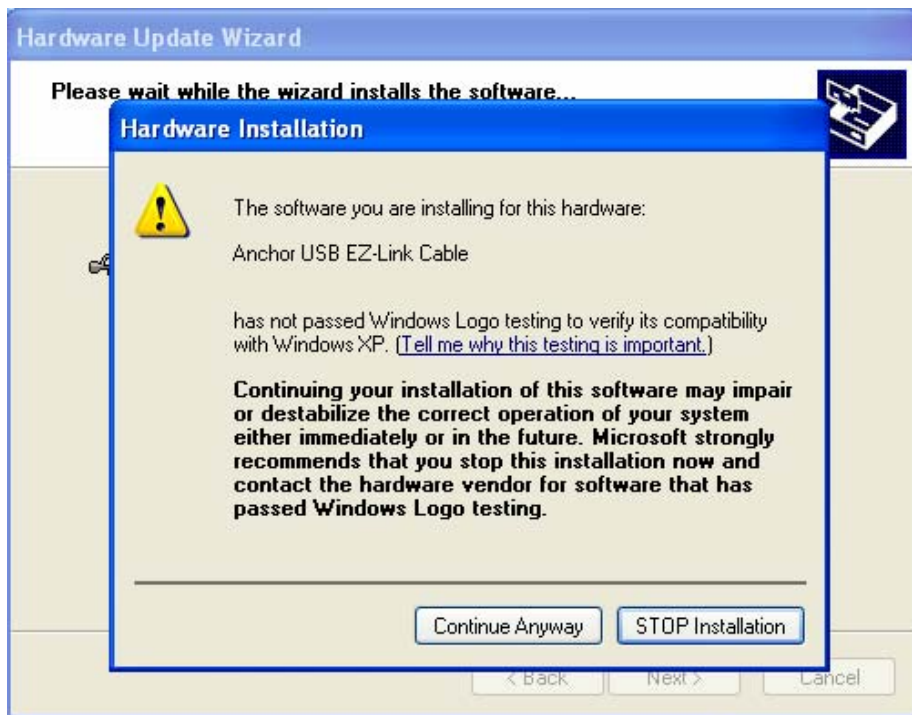
- d. The default path of AR USB driver is stored under AR software at: **C : \Program Files\ARSeries Voice Logger\Driver**, so just need find out the installing path of AR software, then will know USB driver path. Find it out and click [OK], [NEXT]



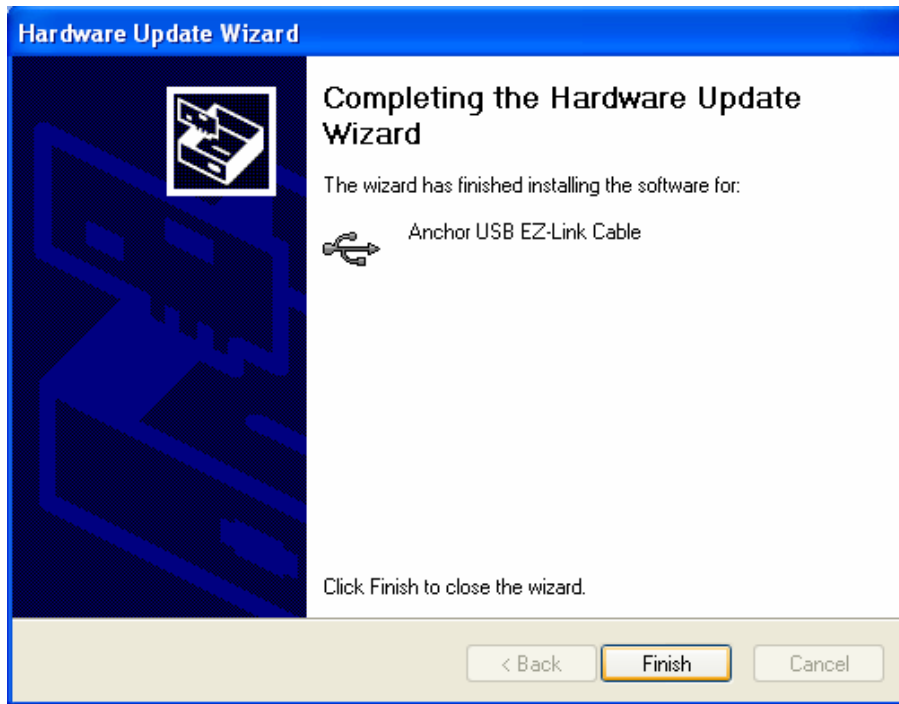
- e. Start to install USB driver automatically



- f. Then click [Continue Anyway] to continue.



- g. Click [Finish] to complete all installing procedures. AR USB driver can work properly now.



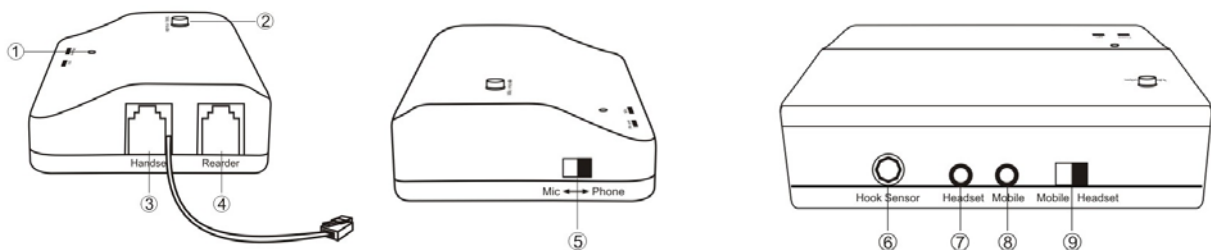
D. via RJ45 Cross cable :

Connect AR Voice Logger to PC via RJ45 cross cable, you need to configure different fixed IP address for Voice Logger and your PC, and the netmask and default gateway should be same. Run program, it will popup login window and display Voice Logger device ID, just input username and password to login.

6 AM2000 Guide

AM2000 works with AR voice logger AR series; it is the accessory device for voice logger. AM2000 connect to [PHONE] port of AR series voice logger via 4-wire cable. It is used to record conference and mobile phone.

6.1 AM2000 Overview and Connection



- ①MIC : Microphone for conference
- ②Mic Mode : Enable conference record button
- ③Handset : Connect with digital phone handset
- ④Reorder : Connect with AR device via 4 wire phone cord
- ⑤Mic<->Phone : Switcher for Digital phone handset and conference mode
- ⑥Hook Sensor : Hood detection input
- ⑦Headset : Connect with mobile phone earphone port

- ⑧ Mobile : Connect with mobile earphone
- ⑨ Mobile<->Headset : Switcher for handset and audio in selection when record digital phone
- ⑩ Phone LED : Indicate digital phone recording
- ⑪ Mic LED : Indicate conference recording status

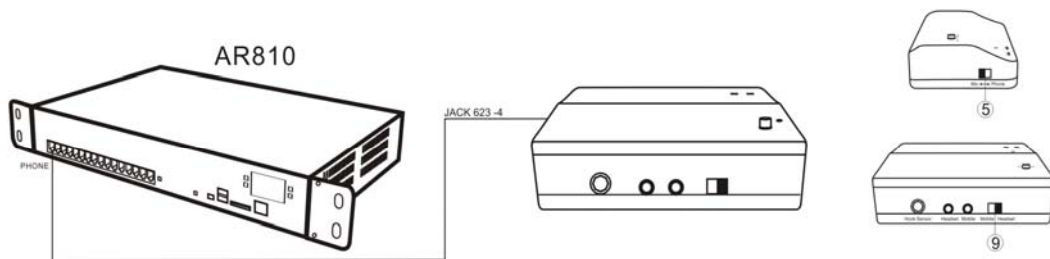
Remark: PC program should be configured while AM2000 connected

[Administrator] – [Channel Settings] – [AM2000 Device Setting] – [AM2000 Device]

6.2 Multi Function Recording

6.2.1 Conference recording

You can record environment sound (i.e conversation or conference) through followed connection:



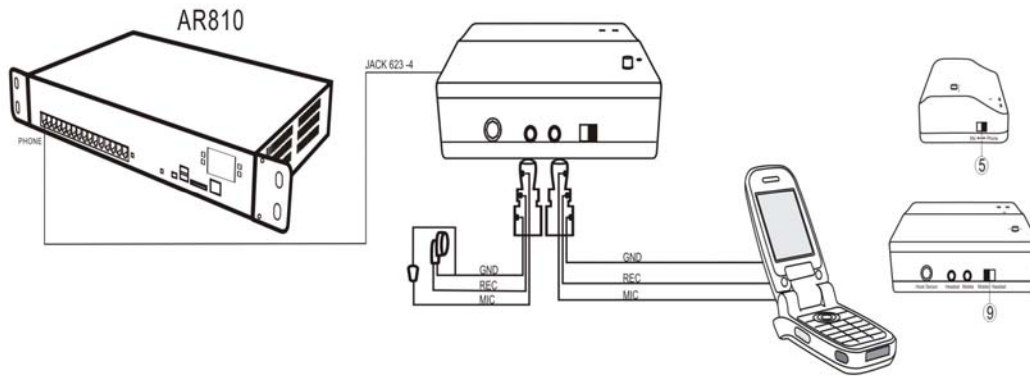
- A. Connect one end of 4-wire cord to AM2000 [Rearer] and another to AR [PHONE] port.
- B. Switch AM2000 [Mic↔Phone] to [Mic].
- C. Push the [Mic mode] button for recording
- D. MIC LED indicates three mode of recording

MIC LED color symbol:

Red ON	STOP Recording
Green ON	Recording all the time
Yellow flash	Voice Operate Transmit

6.2.2 Mobile phone headset recording

- A. Connect one end of 4-wire cord to AM2000 [Reader] and another to AR [PHONE] port.
- B. Connect one end of audio line to mobile phone earphone port and another to AM2000 [Mobile] port. Mobile phone earphone also connect with AM2000 [Headset] port.
- C. Switch [Mic↔Phone] to [Phone] , [Mobile↔Headset] to [Mobile]. [Phone LED] turn on green when recording started, and turns on red when stopped. You have to configure system program port setting as Voice Trigger when mobile phone recording function enabled.



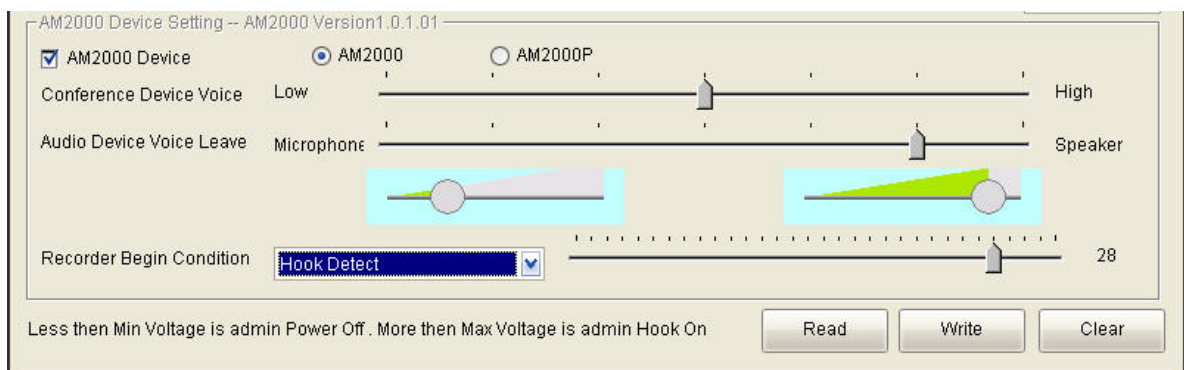
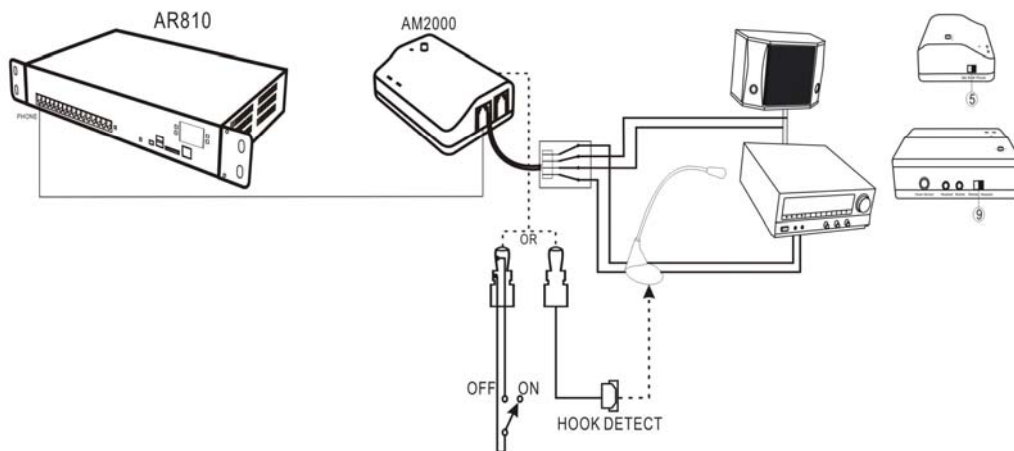
6.2.3 Other device through AM2000

- A. Connect one end of 4-wire cord to AM2000 [Rearder], another to AR voice logger [PHONE] port.
- B. Make a Hook detect recording switcher to connect with AM2000 [Hook Sensor] and your own device.
- C. Switch OFF, the recording started. Switch ON, the recording stopped

PC program configuration

[Administrator] -- [Channels Settings] – [AM2000 Device Setting] – [Recorder Begin Condition] – [Hook Detect]

Diagram



7 Other Equipments Connection

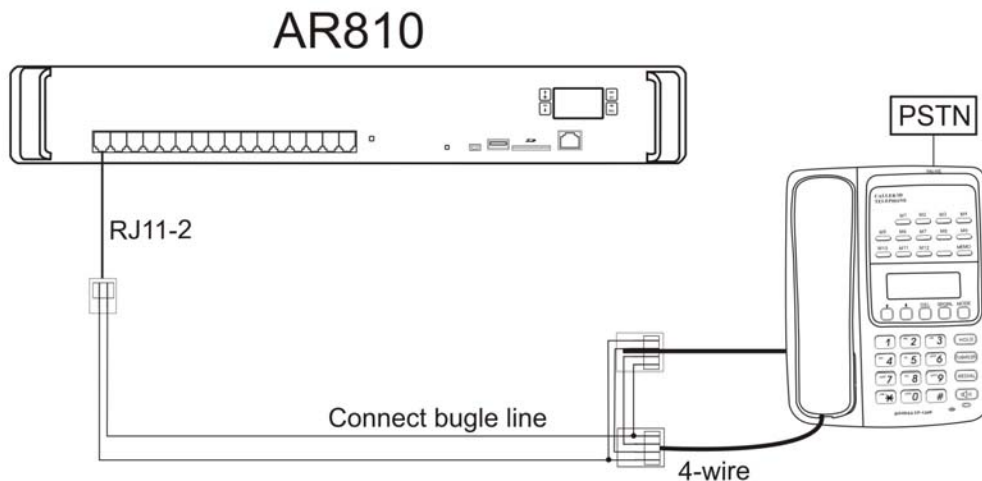
7.1 Normal phone handset connection

- A. Connect one end of RJ11 to AR810 [PHONE] port, another to handset speaker.

PC program configuration

- A. [Administrator] – [Channel Settings] – [Recording condition] – [Voice Trigger]
B. [Administrator] -- [Channel Settings]--[Admit Hook off Voltage Range] : [0V]~[17V]

Diagram



7.2 Interphone connection

- A. Connect one end of RJ11 to AR810 [PHONE] port, another to intercom C audio jack.
B. Tune same channel to interphone A, B & C.
C. Conversation between intercom A and B will be recorded in AR voice logger through interphoneC

PC Program configuration:

- A. [Administrator] – [Channel Settings] – [Recording condition] – [Voice Trigger]
B. [Administrator]-- [Channel Settings]--[Admit Hook off Voltage Range] : [0V]~[17V]

Diagram

