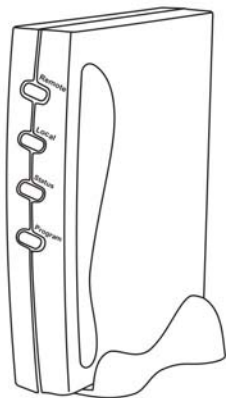


# ARTECH

**LM3500 Super Dialer Programmer**



**English Version**

**Copyright 2005 Artech Ltd.**

## **Terms of Condition**

All contents, accessories, software and the product (refers to QKids) included in this package are the property of Artech Ltd., Taiwan. Unauthorized copy, reproduce and resell of this product are prohibited and will take to law action. This user's guide does not (and is not intended to) responsible for any reception lost during the call or any possible events cost you (refers to the user) or damage/profit-effect to your business and equipments. Artech Ltd. and all of its employees are also not responsible for any of the incident described above. All of the information printed in this users' guide are subject to change and are only for your own reference. Artech Ltd. remains the rights to change any contents, pictures, and text copy without notice. Any failure or error occurs in this users' guide, hardware and software will not be responsible by Artech Ltd. whatsoever.

© 2006 Artech Ltd. Taiwan All Rights Reserved.

Name of Product: LM3500 Super Dialer Programmer

Printed Revision: V2.1

Date of Published: July 2005

# Content

Introduction .....	1
Product Overview.....	2
Packing Contents.....	4
System requirements .....	4
Internal Line Programming Mode.....	5
External Line Programming Mode.....	6
PC software Installation Introduction.....	7
USB driver Installation Introduction .....	7
PC Interface Introduction .....	9
Programming for Dialer.....	14
Internal Line Programming .....	14
External Line Programming .....	15

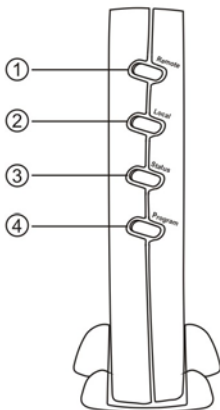
## **Introduction**

Thanks for using our company's new product LM3500 Dialer Programmer, this product is special used for super Dialer programming and it can read or write parameters for Dialer. So it will facilitate user to update parameters more quickly. Due to its fantastic function and visual effect will help user more efficiently for Dialer operation. This product works on PC with our special PC software via USB way. With simple connecting it is very easy to install it. We wish to express our desire that we sincerely hope it can bring great benefit for you.

## Product Overview

Before using LM3500 product, please check below Items first.

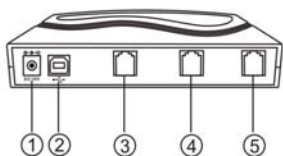
<Front View)



- ① Remote Indicator
- ② Local Indicator
- ③ Status Indicator
- ④ Program Indicator

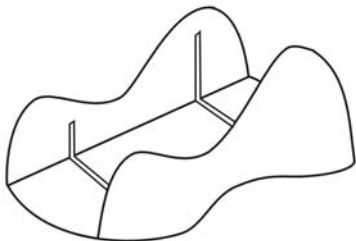
Indicator	Status	Instruction
<b>Remote</b>	On Off	LINE network are using LINE network are not using
<b>Local</b>	On Off	Internal line are using Internal line are not using
<b>Status</b>	On Off	Stand LM3500 online Stand LM3500 not online
<b>Program</b>	On Off Flashing	Stand CPU not working and need pull out USB for reset Stand LM3500 not working Stand LM3500 are programming

<Back View>



- ① Power Jack
- ② USB Jack
- ③ RJ-11 Connecting Dialer Jack
- ④ RJ-11 Line Jack
- ⑤ RJ-11 Phone Jack

<Main Unit Stand View>



## **Packing Contents**

1. Super Dialer Programmer (LM3500)
2. Driver CD
3. USB cable
4. RJ11 cord
5. Main Unit Stand
6. User's manual

## **System requirements**

Pentium 400 MHz CPU or above

Windows98se/XP/2000/NT OS

10MB HD space or above

128 MB RAM or above

CD-ROM

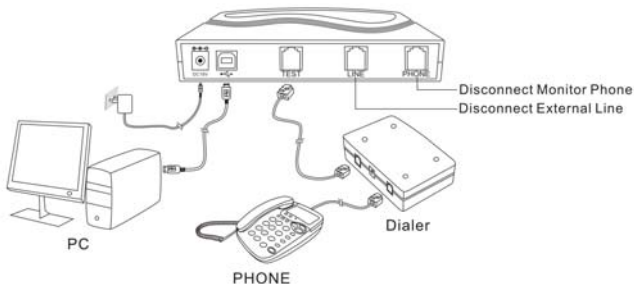
Standard USB port

Standard RJ11 cord

## Internal Line Programming Mode

Please follow below steps to use internal line programming mode for Programming:

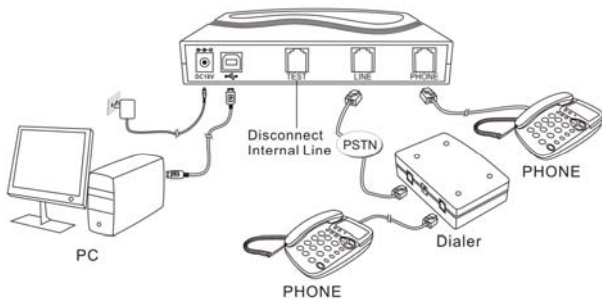
1. Putting power adaptor (DC18V) to connect LM3500 DC Jack;
2. Putting USB cable to connect PC USB Jack and another USB terminal to connect LM3500 USB Jack;
3. Putting RJ-11 phone cord to connect super Dialer Line Jack and another RJ-11 terminal to connect LM3500 TEST Jack;
4. Putting another RJ-11 phone card to connect super Dialer Phone Jack and another terminal to connect telephone;
5. External Line and telephone can be used or not.



## External Line Programming Mode

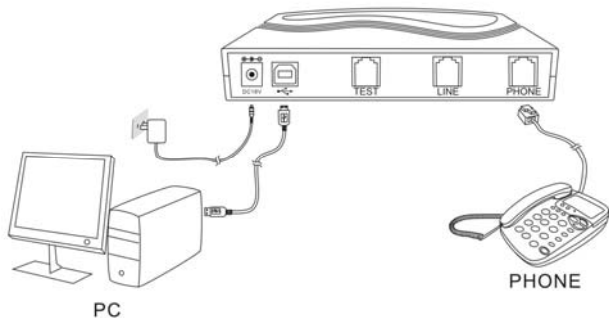
Please follow below steps to use external line programming mode for Programming:

1. Putting power adaptor (DC18V) to connect LM3500 DC Jack;
2. Putting USB cable to connect PC USB Jack and another USB terminal to connect LM3500 USB Jack;
3. Putting PSTN line to connect LM3500 LINE Jack. If need update super Dialer, the client's party also need put super Dialer Line Jack to connect PSTN line and PHONE Jack of Dialer to connect telephone
4. Putting another RJ-11 phone card to connect super Dialer Phone Jack and another terminal to connect telephone;

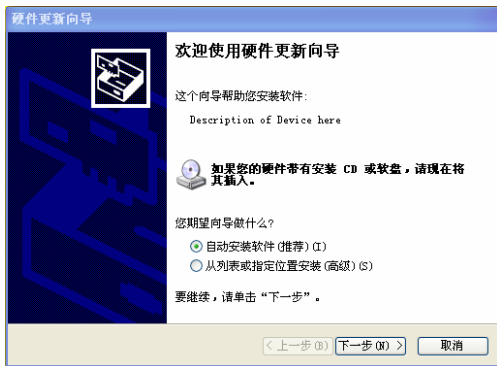


## PC software Installation Introduction

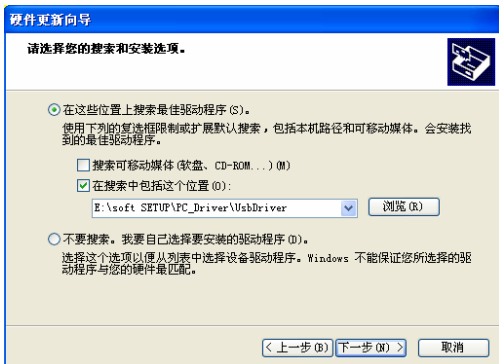
## USB driver Installation Introduction



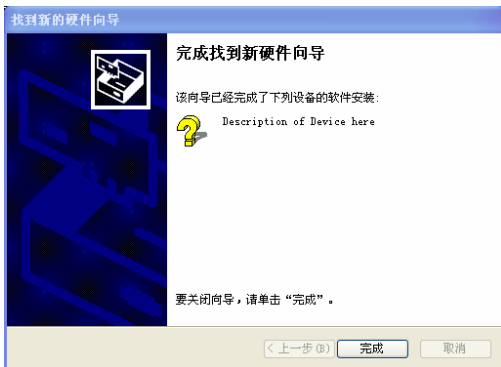
PC interface will display below window according to above connecting way as shown in below :



According to above window can select the driver ( automatically install the software ) or select ( from list or specified location ) , if you do it ok please click Next button.



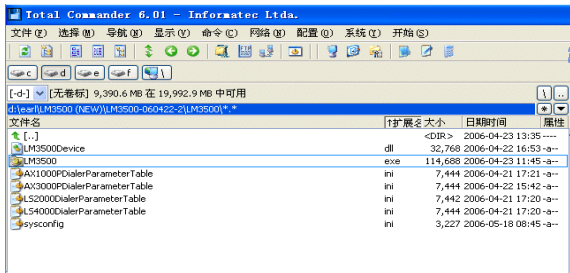
According to above window, you can select specified location of the driver program or you can click Browse button to search the program, if you do it ok please click Next button will start installation.



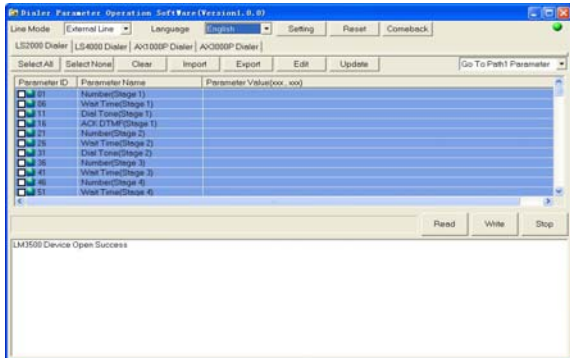
At last, when the driver program is installed ok will pop up above window to click Finish to end installation procedure.

## PC Interface Introduction

If the USB driver installed ok, then to open LM3500 PC software(double-click LM3500.exe program to open up) as shown in below :



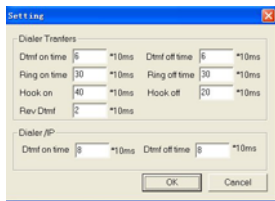
When LM3500 software interface as shown in below:



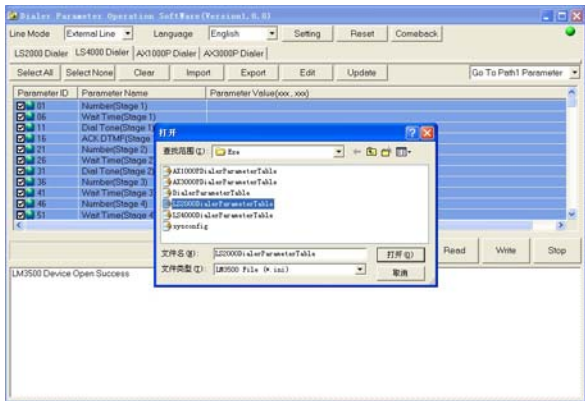
## Interface 1



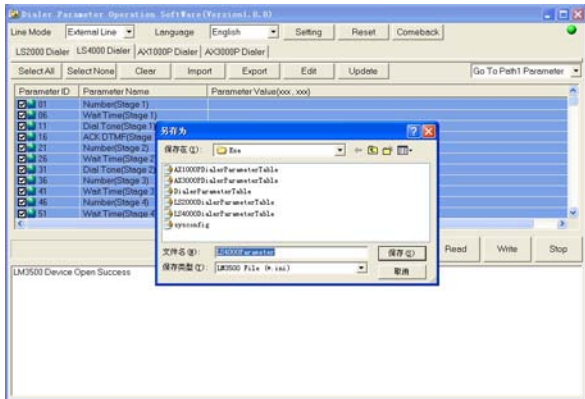
1. Line mode>>Stands programming mode that includes internal line and external line programming mode
2. Language>>Stands operational language that includes Chinese and English languages.
3. Setting>>Stands setting time parameter for Dialer and IP phone.




4. Reset>> Stands system reset
5. Comeback>>Stands resume default settings(production value) in order to prevent some parameters are deleted by accident while the user is editing these parameters.
6. LS2000 Dialer>>Stands some parameters selection for Ls2000
7. LS4000 Dialer>> Stands some parameters selection for Ls2000
8. AX1000P Dialer>> Stands some parameters selection for AX1000P
9. AX3000P Dialer>> Stands some parameters selection for AX3000P
10. Select all>>Stands selecting all parameters
11. Select None>>Stands canceling all selected parameters  
Clear>>Stands clearing all parameters
12. Import>>Stands importing scheduled parameters as shown in below:



13. Export>>Stands exporting settings to save as shown in below:



14. Edit>>Stands on different kinds of Dialer to add or delete parameters selection as shown in below



```
LS4000DialerParameterTable - 记事本
[Path1_English]
DialerParameter01ID = 01
DialerParameter01Name = Number(Stage 1)

DialerParameter02ID = 06
DialerParameter02Name = Wait Time(Stage 1)

DialerParameter03ID = 11
DialerParameter03Name = Dial Tone(Stage 1)

DialerParameter04ID = 16
DialerParameter04Name = ACK DTHW(Stage 1)

DialerParameter05ID = 21
DialerParameter05Name = Number(Stage 2)

DialerParameter06ID = 26
DialerParameter06Name = Wait Time(Stage 2)

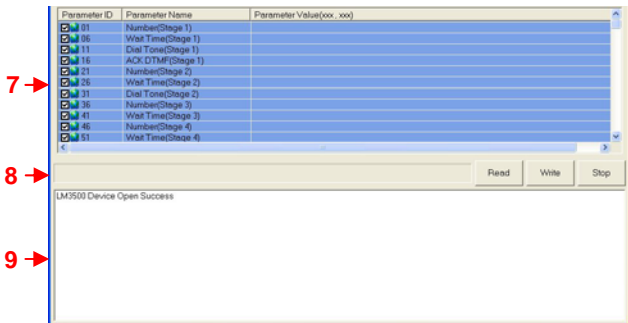
DialerParameter07ID = 31
DialerParameter07Name = Dial Tone(Stage 2)
```

- ! Operation as follows :For example :DialerParameter01ID = 01  
DialerParameter01Name = Number(Stage 1)

If you want to add this item, then only you need to add this item to above text file (Edit). If you want to delete this item, you only need to delete this item and save to above text file. Then PC interface will display selection for adding or deleting. In general, you'd better not modify this item.

15. Update<<Stands updating PC interface, when system is busy status to click this button for real-time updating for system interface.
16. [Go To Path1 Parameter]>>Stands Going to the first path parameter that includes 5 paths parameters and system parameters
17. Red arrow stands system indicator, RED stands system connecting not correct, GREEN stands system connecting ok

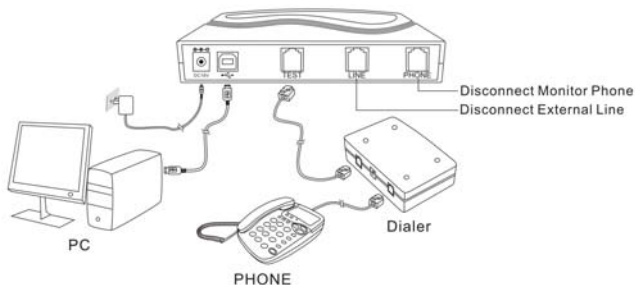
## PC interface 2



1. Parameter ID >>Stands parameter's serial number
2. Parameter Name>>Stands parameter's name
3. Parameter Value(000.000)>>Stands parameter's value(can click to modify)
4. Read>>Stands reading selected parameters
5. Write>>Stands writing selected parameters
6. Stop>>Stands pausing reading or writing operation
7. 7->>> Stands location for parameter's selection and parameter's value.
8. 8->>>Stands progress list when reading or writing operation. °
9. 9->>>Stands description for LM3500 connecting and reading or writing status.

# Programming for Dialer

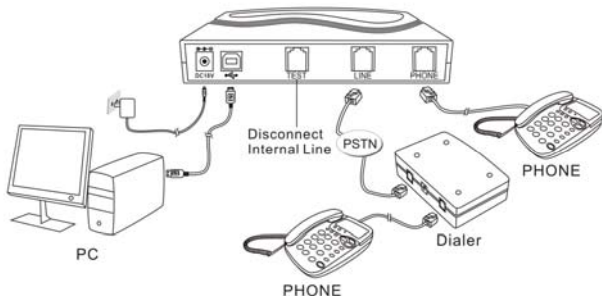
## Internal Line Programming



Please follow below items for operation

1. Please follow above picture to connect device
2. Remote LED of LM3500 will light on
3. Pick up handset which phone connect to super Dialer
4. Selecting internal mode programming and select Dialer type on PC software
5. Selecting parameters which you want to read or write
6. Clicking Read or Write parameters command
7. Local LED of LM3500 will light on and program LED will flash
8. When reading or writing over, both local and program LEDs will be off and remote LED will light on
9. Hanging up handset which phone connecting to super Dialer to end internal programming procedure.

## External Line Programming



Please follow below items for operation

1. Please follow above picture to connect device
2. Remote LED of LM3500 will light on
3. Ringing on telephone and pick up handset
4. Selecting internal mode programming and select Dialer type on PC software
5. Selecting parameters which you want to read or write
6. Clicking Read or Write parameters command
7. Status LED will light on
8. Program LED of LM3500 will flash
9. When reading or writing over, both status and program LEDs will be off and remote LED will light on
10. Hanging up handset which phone connecting to super Dialer to end internal programming procedure.