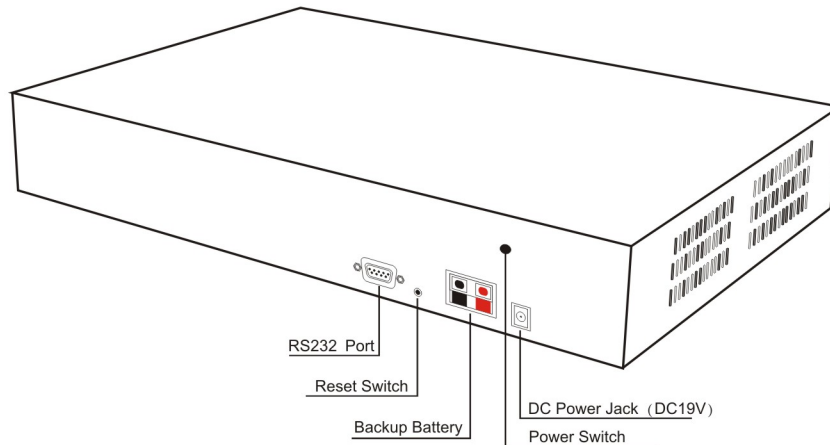


AR800 Voice Logger Quick Installation Guide

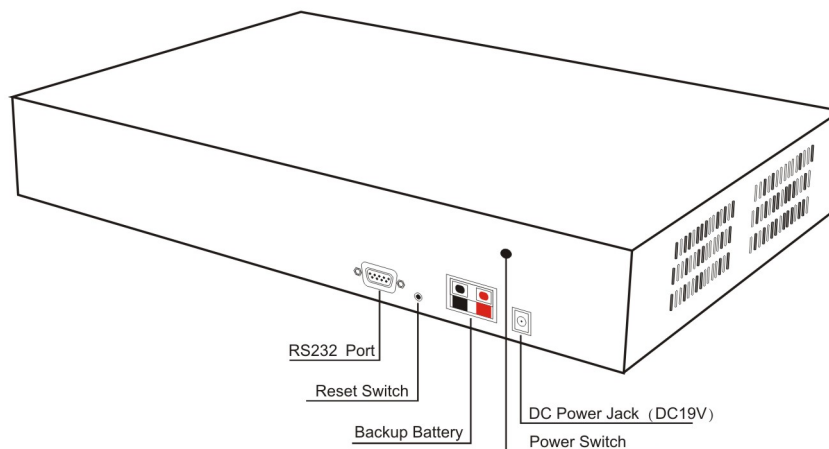
Part 1. Install AR800 Voice Logger Hardware

This user guide is for explaining AR800 hardware and software installation, made in a normal working environment, if some situation differ from conditions, please refer to user handbook or contact with local distributors for help.

Front View



Rear View



1. Power Adapter

- A. Powered by external power adapter with DC19V, 3A
- B. Backup battery (rear side red and black point): can connect DC24V rechargeable battery, or use the output DC24V of key phone system, or parallel use with key phone power. If power is cut off, backup battery functions all features.
 - If the backup battery is special rechargeable type, please make correct setting for battery charging on software (administrator ->system power management), else the battery will not be recharged by voice logger.

2. RJ11 Cable

- A. Connect Line to LINE port of Voice Logger
- B. Connect phone or key phone line terminal to PHONE port of Voice Logger (shown in below diagram)

3. Network Cable

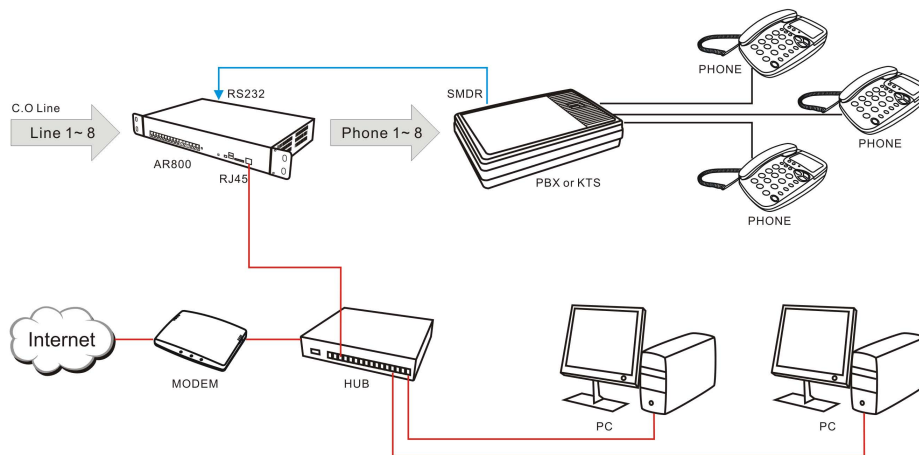
Connect network to RJ45 Jack of Voice Logger

4. PBX SMDR Data Cable

Connect SMDR output of PBX to SMDR IN of Voice Logger via attached RS232 cable.

- SMDR is the abbreviation for station message-detail recording, the extension info of CDR is provided by PBX's SMDR. If there's no SMDR connection and proper setting, AR CDR will not show the extension number field. AR can work with any kinds of PBX SMDR format, and users can configure the SMDR settings of AR to meet the protocol of PBX SMDR.
- If Voice Logger is directly connected to normal phone, rather than PBX system, no need care this function.

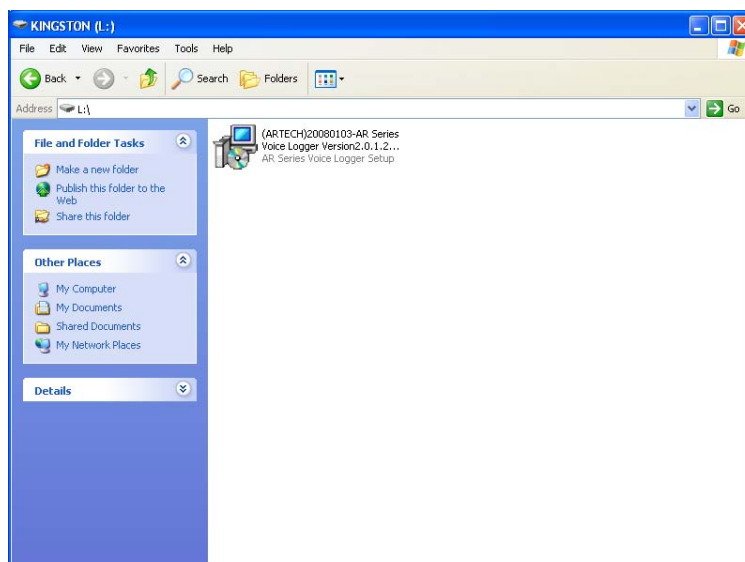
Connection Diagram



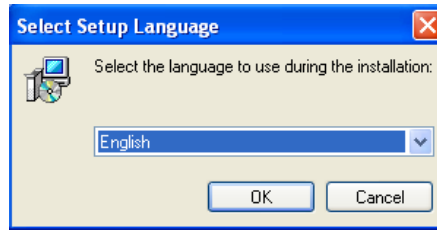
Part 2. Install AR800 Voice Logger Application

All-in-one recording, no PC required while recording. When user wants to search recording or do live monitor while talking, just need install software [Setup.exe] and run it, then can access recording system via WAN/LAN from own PC.

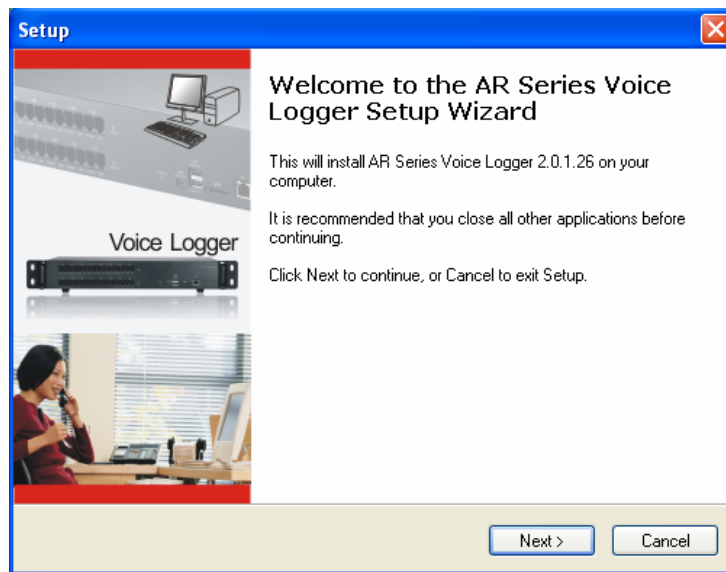
- A. Insert CD to CD-ROM of your PC, then will auto install the application, if auto installation can not make it done, you can check the CD content, then double-click [Setup.exe] can proceed the installation as shown in below:



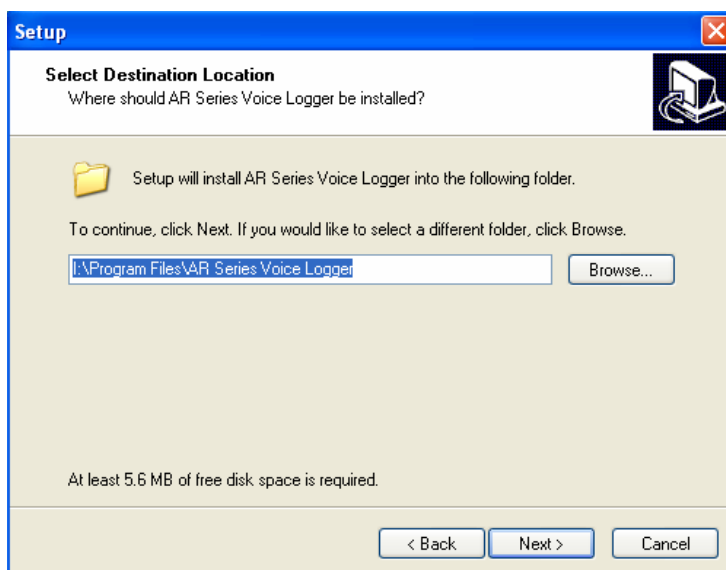
B. Then will popup language option interface, click the bar to select your required language, then click [Confirm].



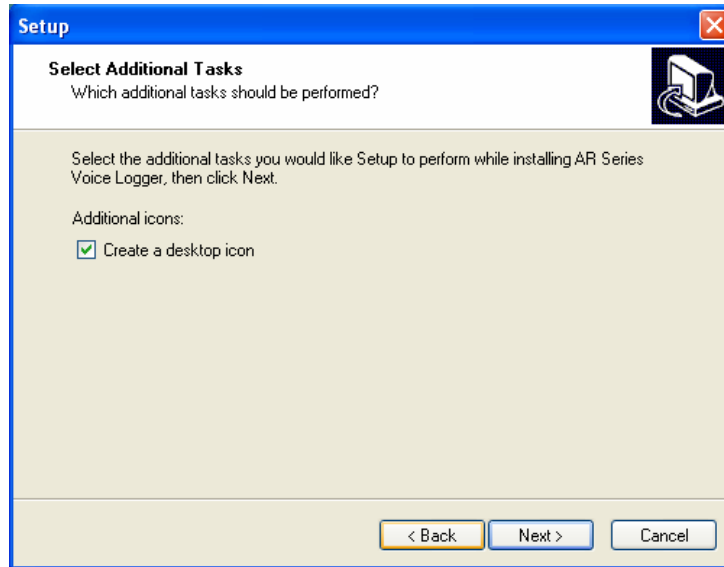
C. Click [Next] to continue installation, then will start installing AR Series Voice Logger software.



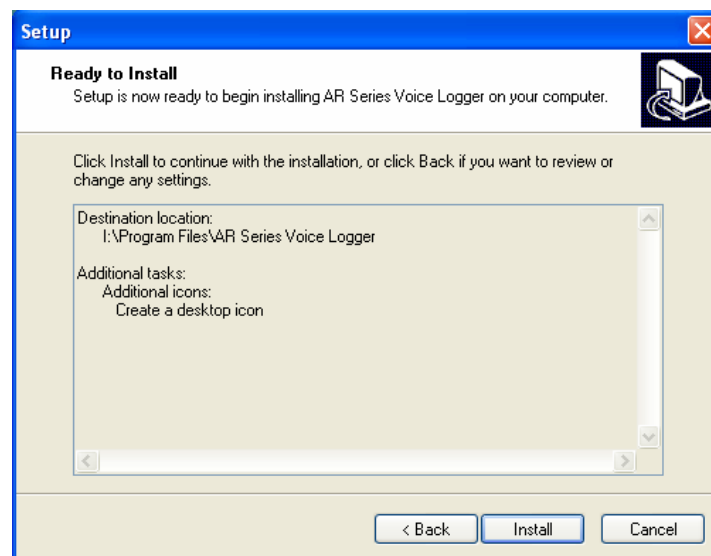
D. Click [Browse] can browse and change installing path, default path is: C:\Program Files\AR Series Voice Logger



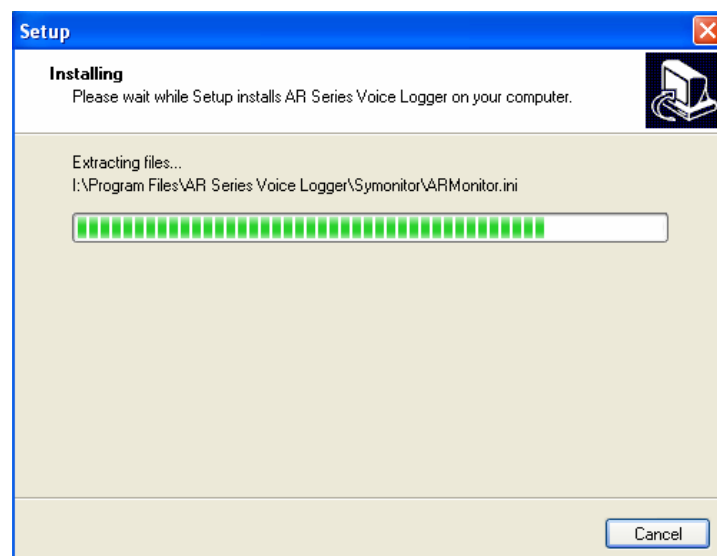
E. Then select [create desktop icon] will create an shortcut of application on your desktop, click [Next] to continue.



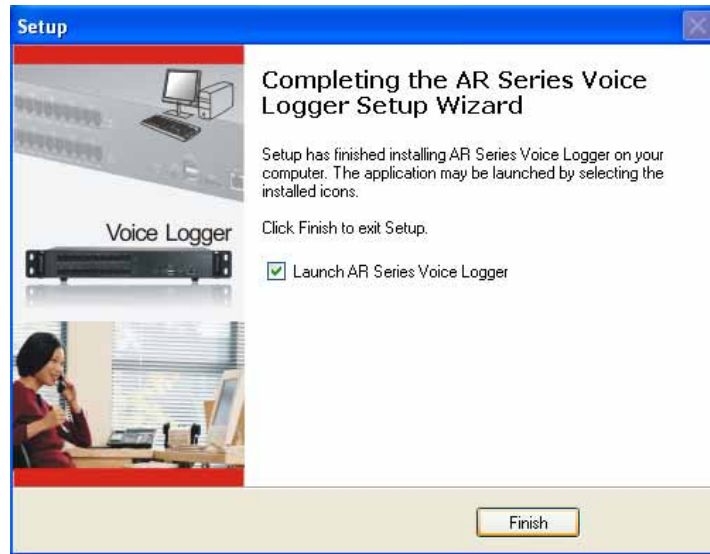
F. Then click [Install] will proceed the installation process, if click [Previous] will go back to previous steps.



G. Installing process will show installation progress bar, please don't click [Cancel] to make sure installation is done completely.



- H. After done will popup a window to remind you run AR software right now or not, if select the option will run it immediately, then click [Finish] to end all installing procedures.

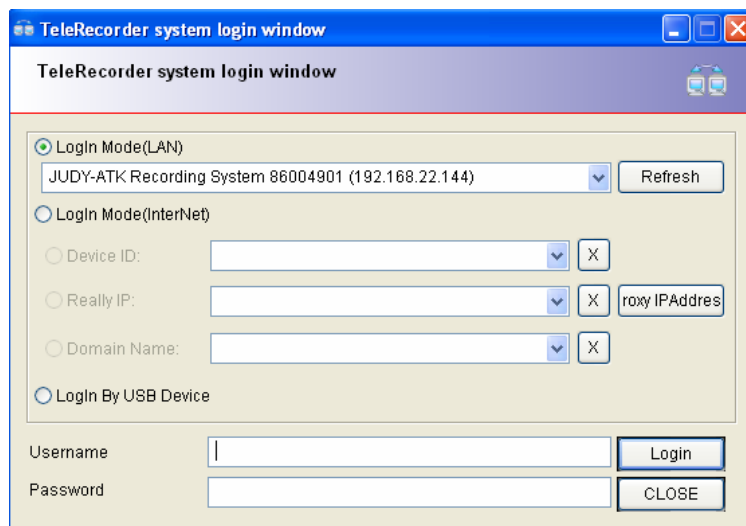


- I. After selected to run application will popup login window as shown in below window.



Part 3. AR800 Software and Hardware Connection

Voice Logger application login interface:



PC login Voice Logger includes 4 ways:

- Factory default login username is: admin, password is: 1111

1. Login via LAN (local access)

When your company interior network has DHCP Server connection, our Voice Logger will auto get IP address. Then if you want to login system under such network, just run the application software, then will popup login window, you'll see all active Voice Logger device ID, to select you need, and key in username and password, then will login system.

2. Login via WAN (remote access)

User can login Voice Logger via remote access by WAN connection, the condition is IP of Voice Logger must set to virtual fixed IP, such as 192.168.1.55, and need set virtual server on your Router(IP sharer), then specify TCP 5053-5057 totally 5 ports to Voice Logger. The external real IP can be flexible IP, no need fixed IP.

Remote access 3 ways below:

On login window - > select [Login mode(Internet)] - > Key in Voice Logger device ID/External net IP/Domain Name->Key in username and password, then you'll login system.

3. USB Connection

If the Voice Logger is the first time for usage, USB driver is required while connecting USB to PC. Then you need install the USB driver first before running AR application. After done, run software -> select [Login by USB device] ->key in username and password, then you'll login system.

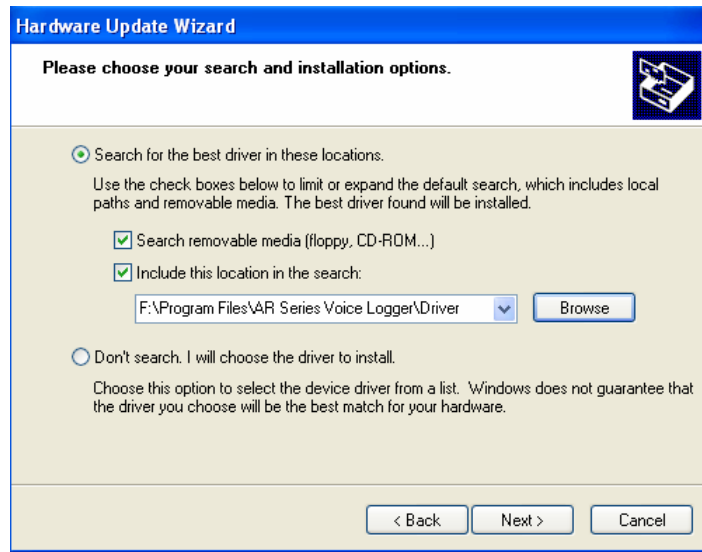
Cautions: If your PC has Win CE, Windows Mobile and other PDA software, please close them first in order to avoid conflict with AR USB driver.

AR Voice Logger USB driver installing procedures below:

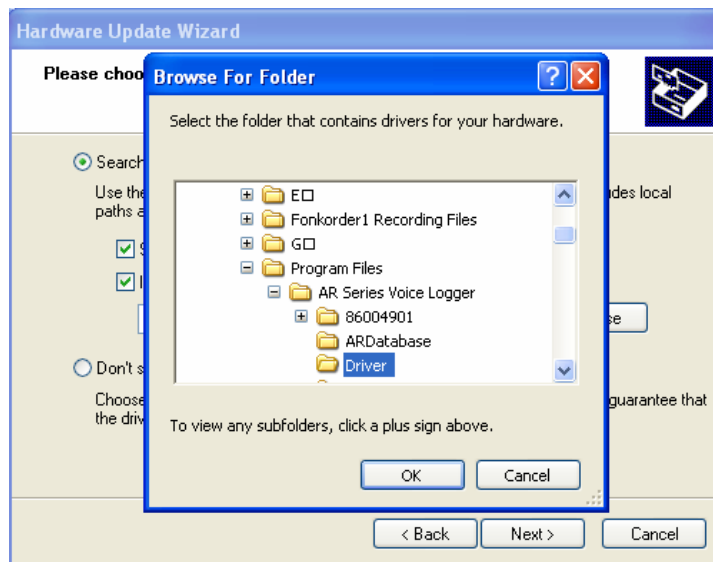
- Then select the second option to find the driver file by manual from specified list, click [Next] to continue.



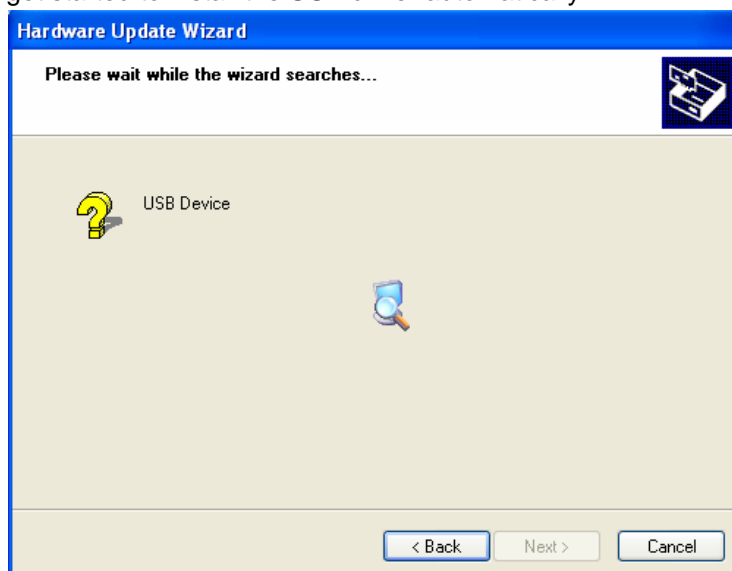
B. Then click [Browse] to find out AR USB driver path, click [Next] to start installaion.



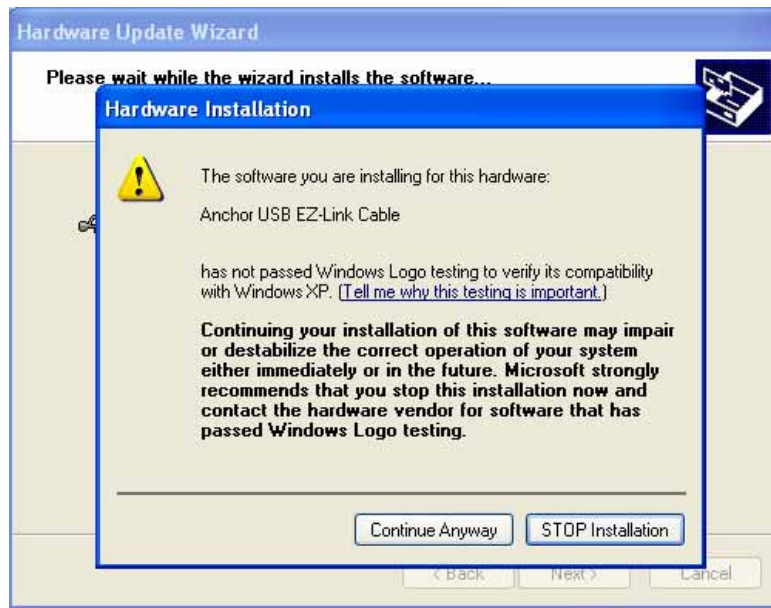
C. The default path of AR USB driver is stored under AR software at: **C : \Program Files\ARSeries Voice Logger\Driver**, so just need find out the installing path of AR software, then will know USB driver path.



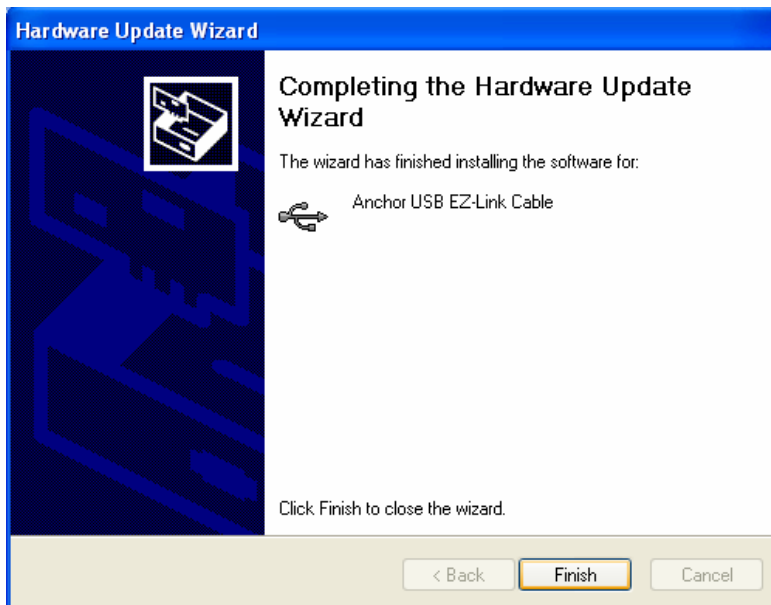
D. After confirmation will get started to install the USB driver automatically.



E. Then click [Continue installation] the first bar on left to continue.



F. Lastly click [Finish] to end all installing procedures. The installation of AR USB driver is succeed.



4. Network Connection

Connect AR Voice Logger to PC via network cable(AR attached network cable), then need set fixed IP for Voice Logger and your PC, must set to same network and preset gate, but in different IP location. Open software and run it will popup login window, and will display Voice Logger device ID, just key in username and password to login.